

# Tour Details

Apr 9 - Apr 16, 2020

Group Leader

*Danielle Duckett*

Group ID

309781

Depart From

*Los Angeles*



## Included Features

- Round trip airfare booked on a commercial airline
- Accommodation in superior 3-star hotels, in triple occupancy with private bathrooms
- Breakfast and dinner daily at the hotel and restaurants
- Organization and promotion of three concert performance opportunities
- Participation in liturgical services at St Peter's Basilica, subject to availability
- Concert arrangements including venue rental, concert permits, advertisement and onsite assistance
- Group and repertoire appropriate venue to include pre-concert rehearsal time, where possible
- Guaranteed audiences
- All sightseeing and entrances as listed in the itinerary
- Attendance at Easter Sunday Mass



## Concert Tour of Italy

*Chaminade College Preparatory School*

Venice Mainland 2, Montecatini 2, Rome 2

**APR 9, 2020: OVERNIGHT FLIGHT** Departure from the United States.

**APR 10, 2020: VENICE MAINLAND** Benvenuti in Italia! Meet your Encore Tour Manager and transfer your hotel in Venice Mestre. Venice, known as the Queen of the Adriatic, consists of an archipelago carved by nearly 150 canals into 118 different islands, and is simply incomparable. On arrival, check into your hotel on Venice Mainland and enjoy dinner together at your hotel. (D)

**APR 11, 2020: VENICE MAINLAND** Enjoy breakfast at the hotel, provided each morning of your tour, enjoy a tour through downtown Venice with your tour manager, including St. Mark's Square and St Mark's Basilica. See gondolas, gondoliers and the famous "Bridge of Sighs" which connects the Doge's Palace to the old prison. During your free time, you may wish to take a gondola ride through the city's beautiful canals or enjoy time shopping for souvenirs. This afternoon, come together to rehearse for your debut concert that will take place this evening! Dinner will be together at the hotel. (B,D)

**APR 12, 2020: MONTECATINI** This morning, you will attend Easter Sunday Mass before departing for Florence, the Cradle of the Renaissance. Subject to the timing of the day, enjoy preliminary sightseeing with a local guide and headsets that will show you the splendid Duomo, Ghiberti's famous Baptistry Doors, Santa Croce and the Piazza della Signoria, the political center of the Renaissance city. A timed entrance is included to the Accademia to see Michelangelo's David! Later, continue to nearby Montecatini, enjoy dinner together in your hotel and





# Concert Tour of Italy

(continued)

your overnight in Montecatini. (B,D)

**APR 13, 2020: MONTECATINI** Today enjoy a full-day excursion to Florence. Enjoy free time in the Open Air Art Museum of Florence and later this afternoon, transfer to your next venue where you will set up and rehearse for tonight's concert performance. Enjoy dinner together and return to your hotel for your overnight. (B,D)

**APR 14, 2020: ROME** Depart Tuscany for the "Eternal City" of Rome today. On arrival, check in to the hotel before heading into Rome for an introductory walking tour and some free time with your tour manager. Today's highlight will be the choir's participation in the Mass at St. Peter's Basilica! Later, enjoy dinner together in a restaurant. (B,D)

**APR 15, 2020: ROME** Your local guide will accompany you through the Vatican Museums today to see the Sistine Chapel and magnificent Raphael rooms. Today, enjoy panoramic city sightseeing of Rome with a local guide including the Circus Maximus, the Imperial Forum, the Pantheon, and the Monument of Vittorio Emanuele (Rome's "Wedding Cake monument"). Entrance is included to the Colosseum. Imagine the bloody battles that once took place in this awe-inspiring structure and marvel at the nearby richly decorated Arch of Constantine! More than just a monument, this arch marks the end of pagan Rome and the beginning of Christian Europe. Later this afternoon, you will rehearse and prepare for your final concert of the tour. Celebrate your successful concert tour with dinner together this evening. (B,D)

**APR 16, 2020: DEPARTURE** Transfer to the airport for return flight to the United States. (B)

*This is a preliminary itinerary for your group.*

(continued)

- Services of a professional Tour Manager throughout your travel program
- Local guides provided for city sightseeing in all major cities
- Basic gratuities for tour manager and bus driver
- Private deluxe air conditioned motor coach
- Direct billing to participants
- Liability coverage in excess of \$50,000,000

## Tour Cost

### Group Fees

Program Fee	\$4049
<b>Total Group Fees (valid through 01/09/20)</b>	<b>\$4049</b>
Additional Fees (as applicable)	
Single Room Supplement	\$570
Ultimate Protection Plan	\$240
Comprehensive Protection Plan	\$200

## Payment Schedule

31-AUG-19	200
01-OCT-19	850
01-NOV-19	850
01-DEC-19	850
09-JAN-20	Balance





 **encore**  
tours™  
A DIVISION of ACIS®

# Registration Booklet

877-795-0813 • [www.encoretours.com](http://www.encoretours.com)



# TRAVELING WITH ENCORE TOURS

*Performing before packed concert halls in historic and exciting cities can be more than a dream.*

We're committed to helping performers experience the world in a more personal, transformative way. It's why we work hard to ensure that your accommodations are perfect, your food excellent, your performance venues inspiring and your tour manager charming and brilliant. By providing a higher level of service, we eliminate worries and stress, so you can focus on your music and experiencing more of the world's magic. You will learn more about the cultures you are visiting, and in turn learn more about yourself.

At Encore Tours, we go to extraordinary lengths to give you the most inspiring, exciting and eye-opening performance tour experience possible.

## WHAT'S INCLUDED IN AN ENCORE TOUR?

Encore Tours delivers the highest quality services in performance travel. Your program fee includes:

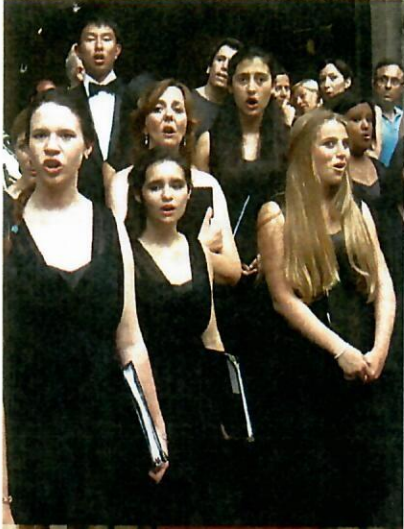
- Round-trip flights on commercial airlines
- Safe, conveniently located three- and four-star hotels with private baths
- Impressive concert venues
- Professional pre-performance publicity
- Audiences for every performance
- Service of an Encore Tour Manager for every bus—a highly trained, multilingual guide and educator
- Our established worldwide office network at your service 24x7
- Excursions, activities and performances as indicated on your itinerary
- Gratuities for your tour manager, driver, guides and waitstaff
- 24-hour access to account information online through My Account

For more details about what is included in your program fee, see the Terms and Conditions on page 9.

**"I'm on cloud 9 after this trip. It was an amazing trip and incredible tour experience that exceeded my expectations which were pretty high."**

-Tom Beal, West Virginia Youth Symphony





# WHAT TO EXPECT ON TOUR

Each Encore tour is unique with its own highlights, features and character. However, all trips share similar elements that qualify them as Encore tours.

## TOUR MANAGER

Praised for their ability to “read the group,” “keep things fun,” and “handle whatever comes up,” our tour managers are often described as the highlight of the Encore Tours experience. We select tour managers who are detail-oriented and enthusiastic, and who bring dynamic personalities, experiences and perspectives to our team. All Encore Tour Managers are university-educated, multilingual graduates of our London training program, and share our passion for travel, education and the arts.

## ITINERARY AND PERFORMANCES

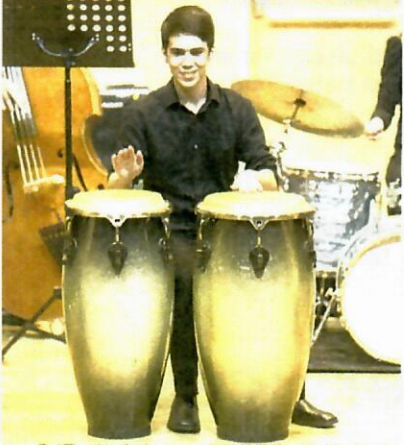
Encore Tours itineraries are custom-designed to meet each group's unique interests and performance goals. A typical day may include sightseeing or a local excursion for half the day followed by an evening performance before a packed crowd. We specialize in selecting venues that will be the best fit for each group's size, abilities and repertoire. Rehearsals and performances are always carefully coordinated with sightseeing and excursions to ensure that you get the most out of your travel experience.

## ACCOMMODATIONS

Your time abroad is precious. We help you make the most of it by only using excellent three- and four-star hotels near the heart of what you came to see. We are proud of the fact that our accommodations are the finest in performance travel.

## MEALS

You will enjoy a variety of meals on your tour, mixing both native and familiar cuisines depending on your area of travel. Keep an open mind and be willing to sample everything—that's what travel is all about! Most days, you will be served a continental breakfast of rolls, cereal, pastries, coffee, tea, hot chocolate and, depending on the local specialties, eggs, fruit and meats. Lunch is usually on your own. Many travelers do what the locals do—instead of having an expensive restaurant meal, they buy fresh ingredients at a local market, then put together a sandwich and have a picnic lunch in a city park. Dinners are usually eaten in your hotel or at a nearby restaurant. They generally include an appetizer, main course and dessert.



## TRAVEL SCHOLARSHIPS

Get rewarded for your creative expression and interest in the world! Encore Tours offers Travel Scholarships to students in grades 6-12. Scholarships range from \$500 to \$1,000! For more information visit [www.encoretours.com/participants](http://www.encoretours.com/participants).



[@encoretours](#)



[@encoretours](#)



[@encoretours](#)



[@encoretours](#)



[@encoretours](#)



# Peace of Mind

The safety and security of our participants, before and during their trip, is always our primary concern. Our policies, 24-hour support network and financial stability are designed to afford you the peace of mind required to enjoy every moment of your travels!

## TRAVEL SECURITY

Encore Tours would never send travelers into harm's way. That's why all travelers are covered under a travel security clause. This clause offers groups a re-routed itinerary at no charge to participants if the U.S. State Department deems your travel destination unsafe. See page 7 for more details.

## 24-HOUR GLOBAL SUPPORT NETWORK

Encore Tours gives you a level of service and support unmatched among performance tour companies. Our extensive overseas infrastructure and Emergency Number connect you to an international support network 24 hours a day, 365 days a year.

## PART OF THE FAMILY

Encore Tours' parent company, ACIS, is the educational travel division of the American Institute For Foreign Study (AIFS). Since 1964, AIFS has been the leading provider of cultural exchange and educational opportunities for more than 1.5 million students.

## PARTICIPANT PROTECTION

All Encore Tours participant payments are protected. As part of the AIFS group, we carry a \$50 million general liability insurance policy, as well as a \$1 million indemnity bond with the United States Tour Operators Association (USTOA) as part of their Travelers Assistance Program.

In addition, your program fee includes Basic Protection Plan coverage with the option to upgrade to our Comprehensive or Ultimate Protection Plans. Complete details on all the protection plans may be found on pages 5, 7 and 8.

## JOB LOSS PROTECTION

No matter which protection plan you choose, Encore Tours offers generous refund policies in the event that you have to cancel your tour due to a job loss in your family. See page 7 for detailed coverage information.



# Contact Client Services

As you prepare for departure, your group or ensemble leader is your first point of contact for any questions you may have concerning the details of your trip. In addition, the Encore Tours website is rich with interesting information that will help you get ready to travel. You can register online and get up-to-the-minute account information in the My Account section. Your My Account login will be in your welcome email. Sometimes you may have questions concerning such items as insurance options or your invoice. In these cases, please contact Client Services using the details below:

**Mailing Address:** Encore Tours, 343 Congress Street, Suite 3100, Boston, MA 02210

**Email:** [accounts@encoretours.com](mailto:accounts@encoretours.com) **Web:** [www.encoretours.com](http://www.encoretours.com)

**Tel:** 877-795-0813 **Fax:** 617-450-5601

Chaminade College Preparatory  
Group Insurance Policy for International Student Trips  
**Only Available to Students, Authorized Group Chaperones and School Employees**

Chaminade College Preparatory has purchased insurance through **AIG** for your upcoming international trip. The coverage becomes effective when the group leaves the United States.

**Insureds are students, employees and authorized group chaperones** who participate in the trip. Any other parties (such as parents) who also go on the trip are NOT covered by this insurance.

Benefits Summary on per person basis, unless otherwise noted. The following does not include all exclusions or coverage requirements. For further coverage information, please contact Janet Koller, Vice President of Finances and Operations at [jkoller@chaminade.org](mailto:jkoller@chaminade.org)

- Medical Expense Percentage Payable: 100%; Maximum is \$100,000 per injury or sickness;
  - Pre-existing conditions limited to \$2,500 of coverage.
  - Mental or nervous disorders limited to maximum of \$1,000.
  - Hospital charges in excess of the Hospital's average daily charge for semi-private room and board accommodation are not covered.
  - Bedside Visitor Per Day Allotments for lodging \$200, for meals \$100
- Emergency Medical Evacuation Maximum: \$1,000,000
  - Family Travel: Chosen Person Lodging Per Day: \$200; Chosen Person Meals Per Day: \$100
  - Family Travel: Spouse and Child Lodging Per Day: \$200; Spouse and Child Meals Per Day: \$100
- Accidental Death \$25,000 (group total is limited to \$250,000)
  - Attendor Per Day Allotment for Lodging: \$100 / Per Day Allotment for Meals: \$50
- Bereavement & Trauma Counseling \$150 per session, up to maximum of 10 sessions with respect to all such losses caused by the same accident.
- Air Bag injury maximum \$10,000
- Seat Belt injury maximum \$25,000
- Emergency Security Evacuation upon qualifying event, up to \$100,000; must use designated specialists; expert consulting provided in kidnap/missing person situations.
- Baggage lost checked baggage: \$1,000 maximum if lost at least 12 hours for reimbursement of necessary expenses; \$2,500 maximum coverage for value of items permanently lost; \$500 per article limit and \$500 combined maximum for certain articles.
- Repatriation of Remains Maximum: \$1,000,000; Attendor and/or Family Travel: Lodging Per Day: \$100 and Meals Per Day: \$75.

# Payment Plans

## 4. CHOOSE A PAYMENT PLAN

You have two ways to pay for your tour:

**Automatic Payments Plan** – We'll divide your total program balance into smaller monthly installments, which will be withdrawn from the checking account you provide. You can track your payments any time on the My Account section of [www.encoretours.com](http://www.encoretours.com). Sign up for Automatic Payments by filling in that option on the paper registration form or by selecting that payment method during the online registration process.

Note: The deadline to enroll for Automatic Payments is 101 days prior to your departure date. You will be sent a notification email once your enrollment is confirmed.

**automatic payments**  
THE SIMPLEST WAY TO PAY

**Benefits of Automatic Payments**

- It's free.
- Payments are withdrawn automatically – no deadlines to remember or late fees to worry about.
- More time to pay: Final payment can be set up to 45 days prior to departure.
- **Win a free trip!** All participants enrolled in this plan are entered in our Free Trip Sweepstakes.

[www.encoretours.com/autopay](http://www.encoretours.com/autopay)

**Manual Payments Plan** – Follow a customized payment plan for your group. Contact your group leader or refer to your customized itinerary with payment schedule for more details.

Important Payment Information:

- If you do not pay in full by the full payment deadline, you will be assessed a \$150 Full Payment Late Fee.
- If you do not pay in full 65 days prior to departure, your reservation will be cancelled as airlines and hotels cannot continue to reserve space.

### LATE REGISTRANTS

If you register for the tour within 45 days of the payment deadline, there may not be time to send an invoice prior to the full payment deadline. In order to avoid a late fee, we recommend that you send the full payment with your registration. If you apply after the full payment deadline, be sure to include the full payment of all trip fees and the \$150 Full Payment Late Fee with your registration. Late registrations are subject to availability and must be paid by credit card, cashier's check or money order. We can not accept personal checks within 65 days of departure.

## 5. GET READY TO TRAVEL

Now you are ready for the experience of a lifetime! Visit [www.encoretours.com](http://www.encoretours.com) for information on what to pack, how much spending money to bring, fundraising suggestions and more.

